

Frameless Glass Channel System



Design - Supply - Fabricate - Install



www.swr-balustrade.co.uk



CONTACT US



TEL: **01442 359878** FAX: **01442 259918**



www.swr-balustrade.co.uk **sales@swr-balustrade.co.uk**



SWR Limited, 2-4 Eastman Way, Hemel Hempstead, Hertfordshire, HP2 7DU
Office Hours: **Monday - Friday, 8.30am - 5.00pm**

SERVICE THE SWR WAY

At SWR we are committed to providing high levels of customer service, whilst constantly looking at ways in which we can improve your experience in dealing with us. We have a dedicated team on hand to guide you in your selection of the most suitable balustrade system for your project.

Designing and installing your balustrade system is easier than you may think. Simply send us your sketches, photographs or technical drawings and we will help you turn your vision into a reality.

Our aim is to provide you with a premium quality, safe and reliable system. We will guide and advise you based on the industry standards and building regulations to ensure complete peace of mind in your selection.

QUALITY ASSURED

As an ISO 9001:2008 approved company, quality is at the forefront in all that we do. We have worked to ensure our balustrade systems are designed and manufactured to comply with industry standards and regulations.

Our systems have been rigorously tested by The British Standards Institute to BS 6180.

To download these test reports and for further technical information please visit us at:

www.swr-balustrade.co.uk/knowledge or contact our Sales Team.



GRADE SELECTION – AISI 304 OR AISI 316, SATIN OR MIRROR POLISHED?

Our balustrade range comprises of AISI 304 and AISI 316 stainless steel, both of which are available in a 320 grit brushed satin finish or a mirror polished finish.

AISI 304 and 316 stainless steel appear the same but perform very differently depending on the surrounding environment. This is due to the differences in the chemical composition between the two grades with AISI 316 offering more resistance to corrosion due to the molybdenum content.

In line with industry guidelines, as a general rule we recommend AISI 316 for outdoor use and AISI 304 for interior projects.

Although satin and mirror polished contain the same chemical composition, they appear very different due to the final surface finish. The mirror finish is polished down to approximately 0.2 microns, which produces a very smooth and reflective surface, making it the most suitable finish for coastal and busy industrial areas containing high emissions. Unlike the satin finish, which is polished down to approximately 0.5 microns, mirror polished provides minimal areas for corrosive elements in the air to rest, which potentially cause permanent damage to your system.

The table below can be used as a rough guide to which grade/finish is appropriate for certain environments.

	Rural		Urban		Industrial		Coastal	
	Internal	External	Internal	External	Internal	External	Internal	External
Satin 304	✓	✗	✓	✗	✗	✗	✗	✗
Satin 316	✓	✓	✓	✓	✓	✓	✓	✗
Mirror 304	✓	✓	✓	✓	✓	✓	✓	✗
Mirror 316	✓	✓	✓	✓	✓	✓	✓	✓

For more information, please visit: www.swr-balustrade.co.uk/knowledge or contact our Sales Team.

GLASS

SWR's approach to safety is paramount, which equally extends to our choice of glass as an infill solution for your balustrade system. All glass supplied by SWR is manufactured in accordance with BS EN 12600:2002 and our dedicated team work closely with you to determine the best glass option based on the load information provided.

We recognise that clients need a "one stop" solution when it comes to purchasing a glass infill balustrade and so SWR has established a partnership with a top glass processor who has been supplying safety glass since 1985 and is a leading supplier of quality architectural glass products throughout the UK.

Whether your requirement is for a domestic glass balustrade for your patio, balcony or a large commercial development, we can supply toughened or toughened & laminated glass to suit your needs.

Choosing The Right Glass

When you contact SWR with your glass enquiry, our experienced and helpful team will determine the right glass for you. We will ask some key questions about your requirements which will enable us to discuss the various options with you:

- What height of glass do you require?
- Is your system internal or external?
- Is a stainless steel handrail required?
- What loading does the glass balustrade need to achieve?
This can be provided by a structural engineer or your local building control officer.

GLASS

Once we have established this information, we can discuss the thickness of glass required and whether this will be provided as toughened, heat soaked glass or toughened & laminated glass. Toughened glass is ideally suited to most applications where safety is critical, but consideration should be taken if the glass balustrade is at a high level.

Toughened & laminated glass is constructed of two pieces of toughened glass either side of a laminate interlayer and offers the same strength under impact as toughened glass with a crucial safety difference - If the pane is damaged resulting in the glass breaking, the fragments will be retained by the laminate interlayer, enabling the system to still act as a barrier until a replacement can be installed.

Your glass balustrade system will not only need to look great, it will also be designed to be a key safety feature in your environment. As safety is paramount to SWR, we can call upon the services of an industry recognised Structural Glass Consultancy who, from the information provided to them, can determine precisely what type of glass is required to achieve the strength it is intended for. For your piece of mind, they can provide a written report detailing the calculations used to determine this.

Delivery To Your Door

SWR can arrange to have your glass delivered to the majority of locations on the UK mainland. By using a dedicated courier for your glass, we can ensure your order arrives quickly and in perfect condition.

All glass delivered to you will have polished edges and radius corners as standard unless requested otherwise. We can also supply frosted/sandblasted glass, silkscreen printed glass and etched glass.

For more information, please visit: www.swr-balustrade.co.uk/knowledge or contact our Sales Team.



GLASS CHANNEL SYSTEM

Our seamless, fashionable, state of the art system is perfected



GLASS CHANNEL SYSTEM

OVERVIEW

SWR now supply a new frameless glass channel balustrade system suitable for both internal and external use. The system consists of an aluminium channel allowing customers to choose between either a base mounted or side mounted application with an improved clamping method to ensure installation times are kept to a minimum and to guarantee your glass is fully stable.

The new clamping method also allows glass to be easily removed or adjusted once the system is installed, saving both time and money. The system is fully tested under the current building regulations of BS6180 and can achieve a maximum loading of 1.5kN.

bsi.



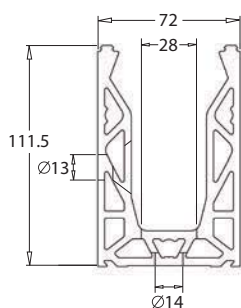
We also provide a 3kN system, which is available on request. Whether the system is to be fixed in or around the home or within a busy commercial environment, SWR will advise you on the most suitable balustrade system for your project.

Various cladding methods are available to protect your channel and cover any visible clamps that may be on show. You also have the choice to include a satin finish or a mirror polished stainless steel slotted handrail to enhance your design and improve the system's overall strength.

For further information on glass, installation guides, building regulations and our test results, please visit our website: www.swr-balustrade.co.uk/knowledge or contact our Sales Team.



COMPONENTS



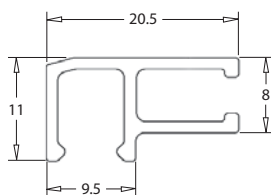
Aluminium Channel

Fixing	Length	To Suit Glass	Part Code
Floor	Up to 3 metres	12 - 21.5	0000.31.400
Side	Up to 3 metres	12 - 21.5	0000.31.401

Suitable for glass sized 12mm-21.5mm - please call for further details.

GLASS CHANNEL SYSTEM

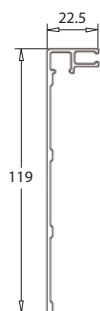
CHANNEL COMPONENTS



Aluminium Top Seal Strip

Length	Part Code
Up to 3 metres	6000.32.050

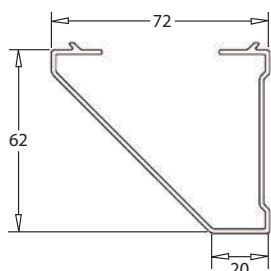
2m required with every 1m of Base Fixed Channel
1m required with every 1m of Side Fixed Channel



Aluminium Side Cladding

Length	Part Code
Up to 3 metres	6000.32.030

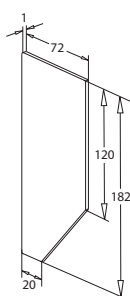
1m required with every 1m of Side Fixed Channel



Aluminium Bottom Cladding

Length	Part Code
Up to 3 metres	6000.32.040

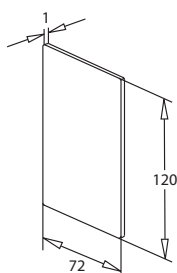
Optional – 1m required with every 1m of Side Fixed Channel



Aluminium End Plate - Bottom Cladding

Position	Part Code
Left	6000.32.06L
Right	6000.32.06R

Required with Bottom Cladding



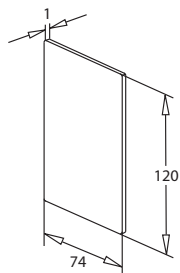
Aluminium End Plate - Base Fixed

Part Code
6000.32.070

Used when fitting Top Seal only to Channel

GLASS CHANNEL SYSTEM

CHANNEL COMPONENTS



Aluminium End Plate - Side Fixed

Part Code
6000.32.074

Used when fitting Top Seal one side of the Channel and Side Cladding to the other



Clamping Wedges & Cover Seal

Suit Glass	Quantity	Part Code
12	Pack of 4	0000.33.312
15	Pack of 4	0000.33.315
17.5	Pack of 4	0000.33.317
19	Pack of 4	0000.33.319
21.5	Pack of 4	0000.33.321

Pack includes 4 Clamping Wedges and all necessary bolts with 2m of Rubber Gasket - everything required for 1m of channel



Aluminium Channel Connecting Dowels

Quantity	Part Code
Pack of 2	6000.33.080

Optional - 1 pack required per Channel connection



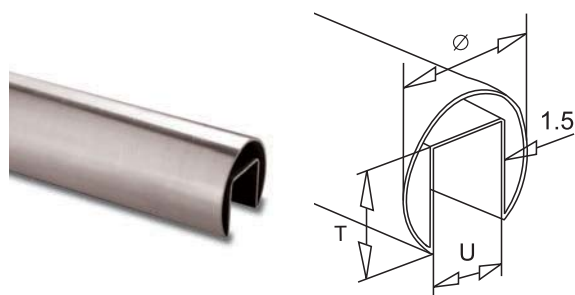
Stainless Steel 10mm Head Spanner

Part Code
0000.90.300

Required to tighten Clamping Wedges

GLASS CHANNEL SYSTEM

SATIN HANDRAIL COMPONENTS



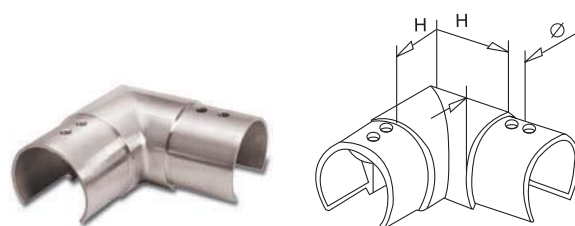
Slotted Tube

Length	Ø	T	U	Grade	Part Code
Up to 6m	42.4	24	24	AISI 304	4215.41.910
Up to 6m	42.4	24	24	AISI 316	6215.41.910
Up to 6m	48.3	30	27	AISI 304	4815.41.910
Up to 6m	48.3	30	27	AISI 316	6815.41.910



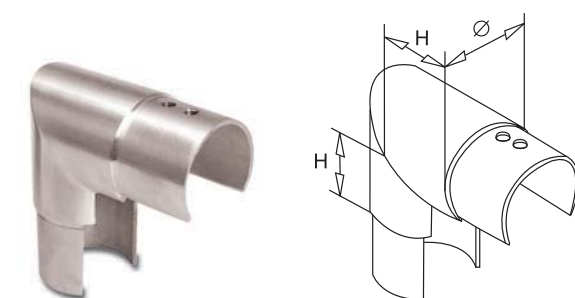
Straight Connector

For Tube	H	Ø	Grade	Part Code
42.4	6	42.4	AISI 304	4215.45.280
42.4	6	42.4	AISI 316	6215.45.280
48.3	6	48.3	AISI 316	6815.45.280



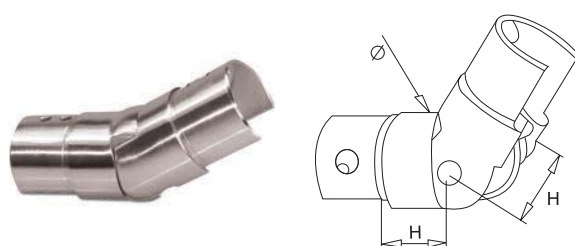
90° Elbow (Horizontal)

For Tube	H	Ø	Grade	Part Code
42.4	30	42.4	AISI 316	6215.45.180
48.3	35	48.3	AISI 316	6815.45.180



90° Elbow (Vertical)

For Tube	H	Ø	Grade	Part Code
42.4	30	42.4	AISI 316	6215.45.170
48.3	35	48.3	AISI 316	6815.45.170

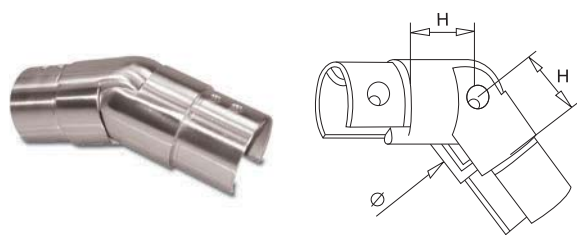


Adjustable Slotted Elbow (25-55° Upward)

For Tube	H	Ø	Grade	Part Code
42.4	30	42.4	AISI 304	4215.45.190
42.4	30	42.4	AISI 316	6215.45.190
48.3	35	48.3	AISI 304	4815.45.190
48.3	35	48.3	AISI 316	6815.45.190

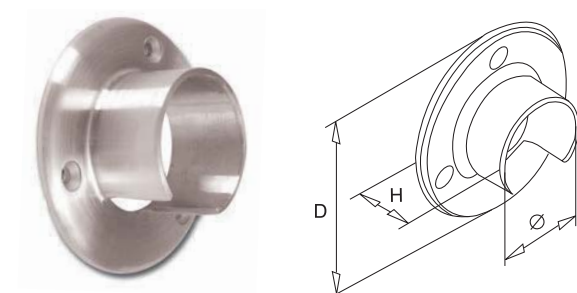
GLASS CHANNEL SYSTEM

SATIN HANDRAIL COMPONENTS



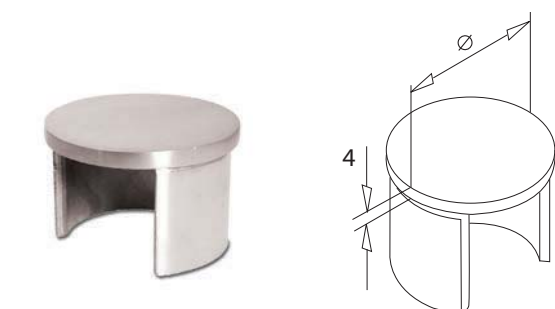
Adjustable Slotted Elbow (25-55° Downward)

For Tube	H	Ø	Grade	Part Code
42.4	30	42.4	AISI 304	4215.45.195
42.4	30	42.4	AISI 316	6215.45.195
48.3	35	48.3	AISI 304	4815.45.195
48.3	35	48.3	AISI 316	6815.45.195



Wall Mounted Bracket

For Tube	H	D	Ø	Grade	Part Code
42.4	30	90	39.3	AISI 304	4215.42.020
42.4	30	90	39.3	AISI 316	6215.42.020
48.3	35	95	45.2	AISI 304	4815.42.020
48.3	35	95	45.2	AISI 316	6815.42.020



End Cap

For Tube	Ø	Grade	Part Code
42.4	42.4	AISI 304	4215.45.140
42.4	42.4	AISI 316	6215.45.140
48.3	48.3	AISI 304	4815.45.140
48.3	48.3	AISI 316	6815.45.140



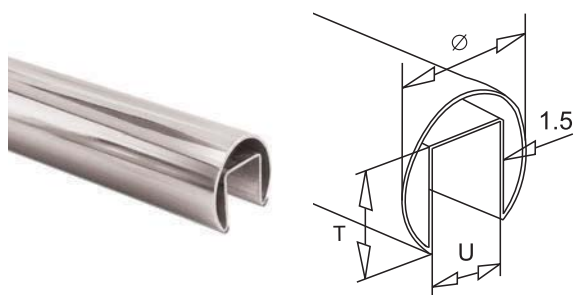
Rubber Gasket

For Tube	Length	To Suit Glass	Part Code
42.4	Up to 6m	8.0 - 10.76	0200.47.012
42.4	Up to 6m	12.0 - 16.76	0200.47.015
42.4	Up to 6m	16.76 - 18.0	0200.47.811
48.3	Up to 6m	8.0 - 13.0	0800.47.0813
48.3	Up to 6m	13.0 - 17.52	0800.47.015
48.3	Up to 6m	18.0 - 21.5	0800.47.019

Rubber Gasket for other sizes of glass are available.

GLASS CHANNEL SYSTEM

MIRROR POLISHED HANDRAIL COMPONENTS



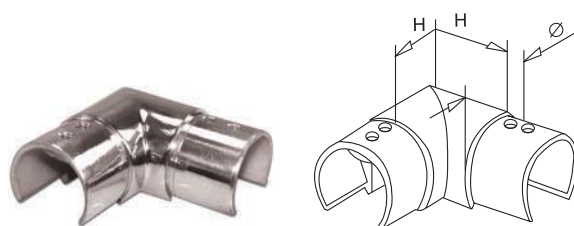
Slotted Tube

Length	Ø	T	U	Grade	Part Code
Up to 5m	42.4	24	24	AISI 304	4215.41.910MR
Up to 5m	42.4	24	24	AISI 316	6215.41.910MR
Up to 5m	48.3	30	27	AISI 304	4815.41.910MR
Up to 5m	48.3	30	27	AISI 316	6815.41.910MR



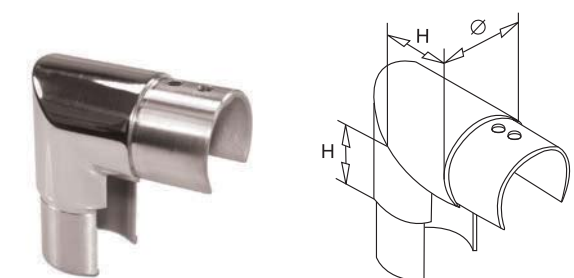
Straight Connector

For Tube	H	Ø	Grade	Part Code
42.4	6	42.4	AISI 304	4215.45.280MR
42.4	6	42.4	AISI 316	6215.45.280MR
48.3	6	48.3	AISI 304	4815.45.280MR
48.3	6	48.3	AISI 316	6815.45.280MR



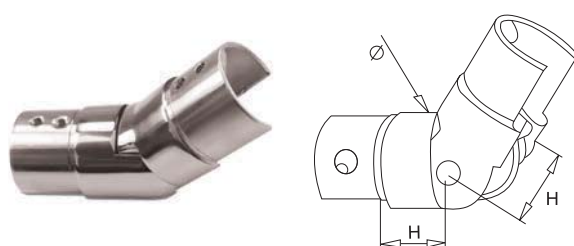
90° Elbow (Horizontal)

For Tube	H	Ø	Grade	Part Code
42.4	30	42.4	AISI 304	4215.45.180MR
42.4	30	42.4	AISI 316	6215.45.180MR
48.3	35	48.3	AISI 304	4815.45.180MR
48.3	35	48.3	AISI 316	6815.45.180MR



90° Elbow (Vertical)

For Tube	H	Ø	Grade	Part Code
42.4	30	42.4	AISI 304	4215.45.170MR
42.4	30	42.4	AISI 316	6215.45.170MR
48.3	35	48.3	AISI 304	4815.45.170MR
48.3	35	48.3	AISI 316	6815.45.170MR

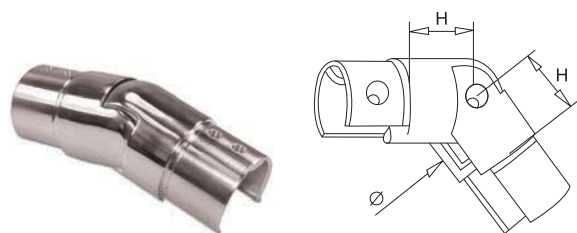


Adjustable Elbow (25-55° Upwards)

For Tube	H	Ø	Grade	Part Code
42.4	30	42.4	AISI 304	4215.45.120MR
42.4	30	42.4	AISI 316	6215.45.120MR
48.3	35	48.3	AISI 304	4815.45.120MR
48.3	35	48.3	AISI 316	6815.45.120MR

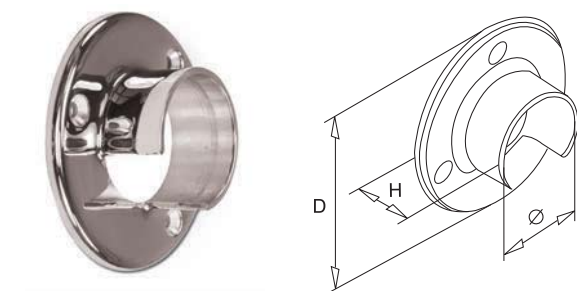
GLASS CHANNEL SYSTEM

MIRROR POLISHED HANDRAIL COMPONENTS



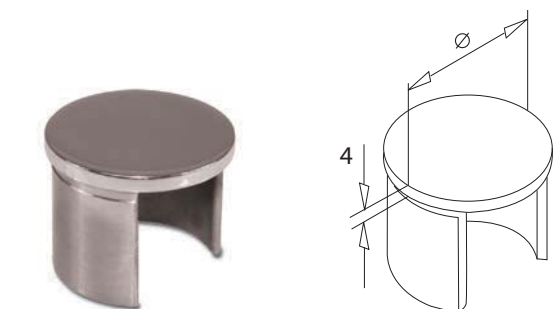
Adjustable Elbow (25-55° Downwards)

For Tube	H	Ø	Grade	Part Code
42.4	30	42.4	AISI 304	4215.45.130MR
42.4	30	42.4	AISI 316	6215.45.130MR
48.3	35	48.3	AISI 304	4815.45.130MR
48.3	35	48.3	AISI 316	6815.45.130MR



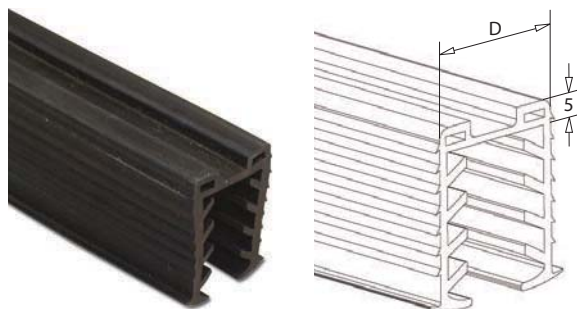
Wall Mounted Bracket

For Tube	H	D	Ø	Grade	Part Code
42.4	30	90	39.3	AISI 304	4215.42.020MR
42.4	30	90	39.3	AISI 316	6215.42.020MR
48.3	35	95	45.2	AISI 304	4815.42.020MR
48.3	35	95	45.2	AISI 316	6815.42.020MR



End Cap

For Tube	Ø	Grade	Part Code
42.4	42.4	AISI 304	4215.45.140MR
42.4	42.4	AISI 316	6215.45.140MR
48.3	48.3	AISI 304	4815.45.140MR
48.3	48.3	AISI 316	6815.45.140MR



Rubber Gasket

For Tube	Length	D	To Suit Glass	Part Code
42.4	Up to 5m	24	8.0 - 11.0	0200.47.010MR
42.4	Up to 5m	24	11.5 - 14.5	0200.47.012MR
42.4	Up to 5m	24	15.0 - 17.0	0200.47.015MR
42.4	Up to 5m	24	17.5 - 19.0	0200.47.019MR
48.3	Up to 5m	27	12.0 - 14.5	0800.47.012MR
48.3	Up to 5m	27	15.0 - 17.5	0800.47.015MR
48.3	Up to 5m	27	18.0 - 19.5	0800.47.019MR
48.3	Up to 5m	27	20.0 - 21.5	0800.47.020MR

Rubber Gasket for other sizes of glass are available.

OVERVIEW

High quality AISI 316 / A4 stainless steel fixings available from SWR

Whether you are fixing into solid concrete, brick or timber; SWR have the perfect solution.

Our dedicated team will guide you through the fixings you require for each component and will advise on the most suitable fixing methods for your project.

All of our fixings are high quality AISI 316 / A4 stainless steel and are available from stock.

For further information, please visit: www.swr-balustrade.co.uk/fixings or contact our Sales Team.



COMPONENTS



Socket Cap Screw

Size	Length	Quantity	Part Code
M8	20	Packs of 10	6000.91.250



Socket Button Screw

Size	Length	Quantity	Part Code
M5	20	Packs of 10	6000.91.140



Self Tapping Pan Head Screw

Gauge	Ø	Length	Quantity	Part Code
4	3	1¼" (30mm)	Pack of 12	6000.91.032
10	5	2" (50mm)	Pack of 12	6000.91.030



Self Tapping Countersunk Screw

Gauge	Ø	Length	Quantity	Part Code
10	5	2" (50mm)	Pack of 12	6000.91.031



Rawl Through Bolt

Size	Length	Quantity	Part Code
M8	95	Pack of 15	6000.91.260
M10	95	Pack of 15	6000.91.360
M12	100	Pack of 15	6000.91.460



Coach Screw

Size	Length	Quantity	Part Code
M8	100	Packs of 12	6000.91.210
M8	120	Packs of 12	6000.91.211
M10	100	Packs of 12	6000.91.310
M10	120	Packs of 12	6000.91.311
M12	100	Packs of 12	6000.91.410
M12	120	Packs of 12	6000.91.411



Studding

Size	Quantity	Part Code
M8	Per metre	6000.91.220
M10	Per metre	6000.91.320
M12	Per metre	6000.91.420



Round Washers

Size	Quantity	Part Code
M8	Pack of 25	6000.91.280
M10	Pack of 25	6000.91.380
M12	Pack of 25	6000.91.480



Dome Nuts

Size	Quantity	Part Code
M8	Pack of 10	6000.91.271
M10	Pack of 10	6000.91.371
M12	Pack of 10	6000.91.471



Hex Nuts

Size	Quantity	Part Code
M8	Pack of 10	6000.91.270
M10	Pack of 10	6000.91.370
M12	Pack of 10	6000.91.470



Polyester Resin

Size	Quantity	Part Code
410ml	Per bottle	0000.62.020



Mixer Nozzles

Size	Quantity	Part Code
For use with all cartridges	Pack of 10	0000.90.002



Structural Adhesive

Size	Quantity	Part Code
25ml	Per syringe	0000.61.637

COMPONENTS



Drill Bits

Ø	Part Code
3.2	0000.90.032
4.1	0000.90.041
5.0	0000.90.050
6.5	0000.90.065
6.8	0000.90.068



Tappers

Size	Part Code
M3	0000.90.003
M4	0000.90.004
M5	0000.90.005
M6	0000.90.006
M8	0000.90.008



Tapping Wrench

Part Code
0000.90.285



Chemical Injection Tool

Size	Part Code
Fits 380-410ml cartridge	0000.90.090



Stainless Steel 10mm Head Spanner

Part Code
0000.90.300

Required to tighten Clamping Wedges



Wire Rope Cutters

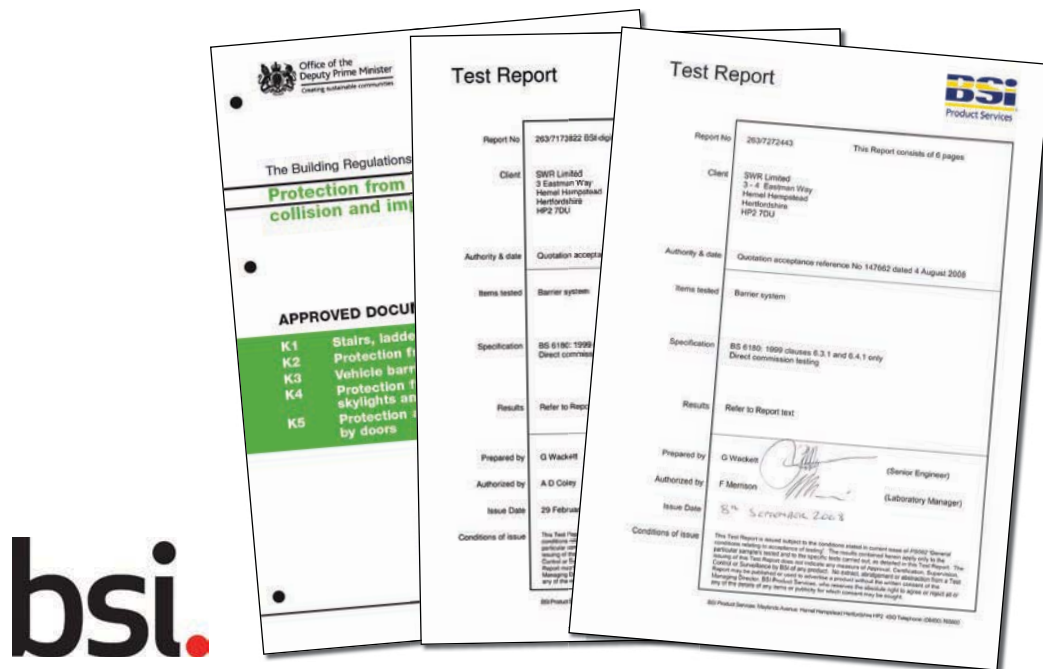
Part Code: **SWR0060**

Type of Wire/Material	Max. Cutting Capacities
1770 - 1960 Grade Wire Rope	4mm

LOADING & BUILDING REGULATIONS

With any project the importance of safety has to be at the forefront of our minds when considering the most suitable balustrade system. With this mentality we work closely with our clients, providing advice on loading and dimensional specifications in line with The Building Regulations K2 Document.

Our systems have been rigorously tested to BS 6180 and have been fully approved for residential and commercial projects. For more information, please go to: www.swr-balustrade.co.uk/regs



bsi.

CUTTING, DRILLING & FINISHING SERVICE

SWR offer a full cutting, drilling and finishing service. Our CAD technicians provide our engineers with technical drawings of your system, designed to your specifications. Our highly skilled engineers then cut, drill and tap the balustrade accordingly.

During production of your system we take care to polish each tube giving it a smooth clean finish ready for on site assembly.

In line with our ISO 9001:2008 procedures we carry out rigorous checks throughout the production process to ensure ease of use and simple assembly when on site.

For your convenience on site we work to package each part so that all are marked up clearly and can be easily identified when unpacking and preparing to start the job. It's the small details that make the difference and ultimately help you to safely and efficiently install your balustrade system.



CLEANING & MAINTENANCE

An important thing to remember with stainless steel is that it is stain 'less' and not stain 'free'. Stainless steel is not completely corrosion proof and does require on-going cleaning and maintenance. As members of the British Stainless Steel Association we advise all of our customers to carry out necessary maintenance on your system to help retain the modern finish of the product.

We supply our own interior and exterior cleaning products specifically designed for stainless steel. Our cleaners give a sparkling appearance leaving a protective film to aid in future maintenance.



SWR Easy Clean

Description	Size	Part Code
Interior Cleaner	750ml	0000.60.015

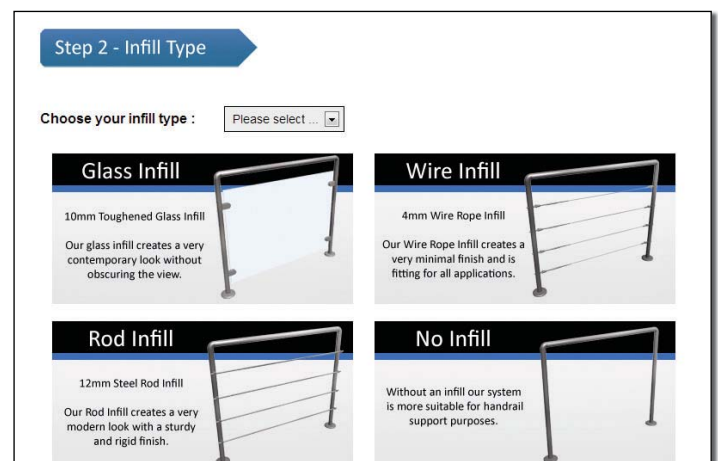
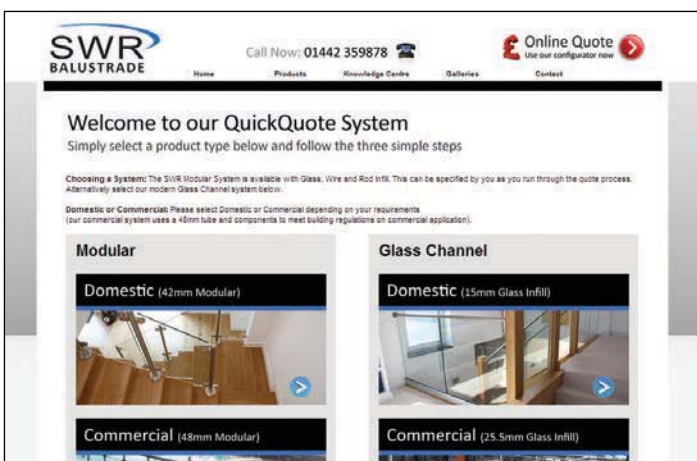


SWR Metal Shine

Description	Size	Part Code
Exterior Cleaner	750ml	0000.60.020

SWR also provide a Online Quote Configurator so that you can customise your balustrade system. Simply select the product type that you are interested in, followed by the estimated length of the system and the number of bends/corners, and we'll get back to you with a quote. This process is fast and easy to use.

Visit: www.swr-balustrade.co.uk/quote



TERMS & CONDITIONS

1. GENERAL

1.1 All sales contracts of SWR Ltd. (herein referred to as "the Seller") shall be deemed to incorporate these conditions except in so far as these conditions are varied by any special conditions agreed in writing between the parties. Any terms and conditions in the purchase order which are inconsistent with these conditions shall have no effect.

2. CATALOGUES

2.1 Catalogues, price lists and any advertising matter published by the Seller are intended only to give an indication of the general nature of the goods available and nothing contained in any such catalogue, list or other matter shall be or be deemed to be a representation by the Seller or a condition or warranty affecting any goods sold.

3. PRICES

3.1 Unless otherwise expressly stated all quotations shall be valid for a fixed period of 30 days only.

3.2 Unless otherwise expressly agreed in writing the price payable for all goods supplied by the Seller shall be the price ruling at the date of despatch plus value added tax thereon at the rate ruling at the date of despatch. All prices are subject to change.

4. PAYMENT

4.1 All goods shall be paid for in full by the Purchaser to the Seller at the time of ordering, by cash, cheque, credit card or finance.

4.2 Where account facilities apply, having been expressly agreed in writing by the Seller, the price shall be paid in full by the Purchaser to the Seller within 30 days of the date of the invoice.

4.3 For all installation products and services purchased a deposit (shown overleaf) is required. This is payable on order confirmation. The balance is payable after the products have been delivered. If the seller is responsible for installation, this balance will be payable once the installation is complete, unless a finance agreement is in place.

4.4 The Seller reserves the right to charge interest at a rate 5% above the Barclays Bank base rate from the date when the price falls due for payment until the date on which such payments are actually received by the Seller, and in the case of any default in payment the Purchaser shall give the Seller every assistance in the repossession of the goods in respect of which payment has not been made.

5.0 DOOR STEP SELLING - COOLING OFF PERIOD

5.1 For orders signed away from the sellers normal premises (i.e. orders placed at your home, place of work or other third party premises) under the doorstep selling regulations act you are entitled to a statutory 7 working days cooling off period - beginning from the date you place your order. Certain goods are exempt from this cooling off period, for example a special order or goods which are personalised or made to a personal specification

5.2 You must inform us in writing during the cooling off period that you are cancelling the order by sending the below notice of cancellation to SWR Ltd. See point 11 below.

5.3 If you have not received the goods at the time of cancellation of the contract and we have not processed the goods for delivery, we will refund to you all the monies paid by you for the goods in question in the same form of payment originally used for the purchase as soon as possible and in any event within 30 days of your cancellation being accepted.

5.4 If applicable any related credit agreements will automatically be cancelled if the order is cancelled within the cooling off period mentioned in point.

5.5 If you do not return the goods to us we shall be entitled to deduct the direct costs of recovering the goods from the amount to be refunded to you.

6. TRANSFER OF TITLE

6.1 Title to goods shall only pass to the Purchaser from the date of payment in full of all sums payable to the Seller under the contract by which those goods were supplied or any other contract. Until such time, goods remain the absolute property of the Seller and the Purchaser shall keep them insured to their full invoice value. Such goods shall be stored in such a way that they are readily identifiable and the Seller shall be entitled to repossess such goods at its entire discretion and at any time prior to payment in full therefore. The Purchaser hereby grants the Seller, its servants and agents a licence to enter upon the Purchaser's premises for the purpose of repossessing the same. Such repossession shall not affect in any way the continued existence of any contract between the parties.

If goods in which title has not passed to the Purchaser are subjected to any process, addition or treatment, the property in the goods so processed, added to or treated, shall be vested in the Seller until title has passed.

6.2 All goods sold by the Purchaser to third parties before title has passed to the Purchaser, shall be sold as agent for the Seller and all proceeds received from such sales shall be held by the Purchaser in trust for the Seller, until payment in full of all amounts outstanding has been received by the Seller.

6.3 Notwithstanding that property in any goods has not passed to the Purchaser, the Seller shall be entitled to sue the Purchaser for the price of such goods if not paid on the due date.

7. DELIVERY

7.1 Any time for the delivery stated by the Seller will be an estimate only on the likely time required to effect delivery from the date of receipt by the Seller of full and final instructions. The Seller will make every reasonable effort to comply with such estimate but the Purchaser shall have no right to damages or to cancel any contract with the Seller by reason only of failure on the part of the Seller to meet any stated delivery time.

7.2 The Seller will endeavour to comply with reasonable requests by the Purchaser for postponement of any stated delivery date but shall be under no enforceable obligation to do so. In the event of any such postponement at the request of the Purchaser, the Purchaser shall pay to the Seller on demand all costs and expenses thereby incurred including a reasonable charge for storage thereby occasioned.

7.3 When the goods are sold "carriage paid" by the Seller, delivery shall be deemed to take place at the moment the goods are lifted from the delivery vehicle and thereafter the goods shall be at the risk of the Purchaser in all respects.

8. DAMAGE IN TRANSIT

8.1 No claim for goods damaged or lost in transit will be accepted by the Seller unless written notification of such damage or loss is given to the Seller by the Purchaser and the carrier within four working days of receipt of the goods by the Purchaser and all damaged goods are retained by the Purchaser pending inspection by the Seller and carrier.

9. LIABILITY

9.1 In placing an order with the Seller subject to these conditions the Purchaser is deemed to acknowledge that the Purchaser is not dealing as a consumer and that the provisions of these conditions restricting the liability of the Seller are (save as may be notified in writing by the Purchaser to the Seller before the time at which such order is accepted) fair and reasonable in the light of all circumstances then known to the Purchaser.

9.2 All goods supplied by the Seller are fit for the normal purpose for which such goods are intended. No liability is accepted if the goods are found not to be fit for any other purpose whether or not such other purpose was made known to the Seller before the contract was made. Any recommendations made by the Seller in such circumstances are made in good faith but as the conditions of use are outside the control of the Seller, it is for the Purchaser to satisfy himself as to the suitability of the goods. Save as aforesaid any conditions or warranty implied or imposed by law as to the quality fitness for the purpose or otherwise however of any goods supplied by the Seller is hereby expressly excluded and in no circumstances (except death or injury caused by the Seller's negligence) shall the Seller be liable for any loss injury or damage caused or arising whether in contract or in tort save as expressly provided and to the extent provided in this condition.

9.3 If any defect in workmanship or materials shall manifest itself in any goods supplied by the Seller within 12 months of the date of delivery thereof provided always that the goods shall have been found not to be to specification the Seller shall have the right at its sole discretion to replace free of cost to the Purchaser (other than the cost of carriage) any such goods or parts thereof and the Purchaser shall be obliged to accept such replacement in full satisfaction of its claim and shall also return to the Seller at the expense of the Purchaser the goods originally delivered or such defective part thereof as may have been replaced. If the Seller shall fail to replace such goods or parts thereof any amount recoverable by way of damages from the Seller by the Purchaser shall be limited to the difference between the value of the goods at the time of the delivery to the Purchaser and no claim whatever by the Purchaser shall entitle the Purchaser to withhold payment of the price of any goods or to any right of set-off against any payment due to the Seller under any contract made by the Seller and the Purchaser, nor will any claim made by the Purchaser entitle the Purchaser to reject any goods supplied and treat the contract as repudiated and any remedy of the Purchaser shall be in damages only as hereinafter provided.

9.4 The Seller shall be under no liability in respect of any defect arising from fair wear and tear, willful damage, negligence, abnormal working conditions, failure to follow the Sellers instructions, whether oral or in writing, misuse or alterations of the Goods without the Seller's approval.

9.5 Given the multitude of legislations, we cannot accept liability for the compliance of our products to local building regulations. We therefore would like to draw your attention to the fact that it is always the customer's responsibility for observing the existing legal regulations and advice should be sort from your local planning office.

10. FORCE MAJEURE

10.1 In the event of any act of God, outbreak of war either general or local, riot or other civil commotion, strike lock-out or act or decree of any government or any other matter or thing beyond reasonable control of the Seller, the Seller:

10.2 Shall not be liable for any injury or damage of any kind thereby caused or resulting therefrom; and

10.3 May at the sole discretion of the Seller withdraw wholly or in part from the contract without any liability whatsoever. The construction validity and performance of this contract shall be governed by the laws of England and all disputes which may arise under out of or in connection with or in relation to this contract shall be subject to the jurisdiction of the courts of England.

Design - Supply - Fabricate - Install

www.swr-balustrade.co.uk



Version B14B.2